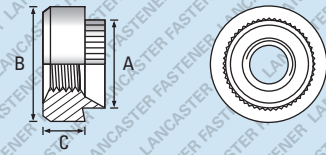
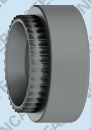


# Rivet Bushes


**Also available in Steel / Zinc Plated - See page 139**

Further technical data is available on page 256

Thread	M2.5	M3	M3.5	M4	M5	M6	M8	M10	M12	Thread
A Dia. of spigot +0.00 -0.13	5.54	5.54	6.73	6.73	7.92	9.52	12.70	15.87	19.05	A Dia. of spigot +0.00 -0.13
B Dia. of body ±0.15	7.92	7.92	9.52	9.52	11.10	12.70	15.87	19.05	25.40	B Dia. of body ±0.15
C Depth of body ±0.13	3.17	3.17	3.17	3.17	3.81	5.08	6.35	7.62	10.16	C Depth of body ±0.13
Recom. Hole Size +0.05 -0.00	5.54	5.54	6.73	6.73	7.92	9.52	12.70	15.87	19.05	Recom. Hole Size +0.05 -0.00
GAUGE	Bulk Carton Quantity   Small Box Quantity   Weight (KG) per 1,000								GAUGE	
10 swg	12,000   1,000 1.34*		10,000   1,000 1.84	4,000   500 2.82	4,000   250 4.62	2,000   200 8.59			10 swg	
12 swg	12,000   1,000 1.28*		10,000   1,000 1.81	4,000   500 2.72	4,000   250 4.44	2,000   200 8.21			12 swg	
14 swg	12,000   1,000 1.23		10,000   1,000 1.72	4,000   500 2.66	4,000   250 4.28	2,000   200 8.19			14 swg	
16 swg	12,000   1,000 1.19		10,000   1,000 1.65	4,000   500 2.55	4,000   250 4.17	2,000   200 7.96			16 swg	
18 swg	12,000   1,000 1.12		10,000   1,000 1.62	4,000   500 2.50	4,000   250 4.09	2,000   200 7.92*			18 swg	
20 swg	12,000   1,000 1.10*		10,000   1,000 1.54	4,000   500 2.43	4,000   250 4.05	2,000   200 7.75*			20 swg	
-									-	
-									-	
-									-	
-									-	
-									-	
-									-	
-									-	
-									-	

 A1 / A2 Stainless Steel - preferred and available from stock.

**PRODUCT CODE EXAMPLE**

HCRRB05012A2

**PRODUCT DESCRIPTION EXAMPLE**

M5 x 12 swg Round Rivet Bush A2 Stainless Steel

\*Non preferred size and may be subject to minimum manufacturing quantities. \*\*Grade depends on method of manufacture.

E. &amp; O. E

© 2021, Lancaster Fastener Co Ltd. All images are copyright protected.